

# P.S. 5 Addition and Rezoning Planning in District 31: Presentation to CEC 31

*Office of District Planning*  
June 24, 2024



# Agenda

- Introductions
- P.S. 5 Addition Opening in the 2025-2026 School Year
- Rezoning Timeline
- Potential Rezoning Areas, Approaches, & Impact
- Discussion, Questions, & Feedback
- Next Steps and Contact Information
- Appendix

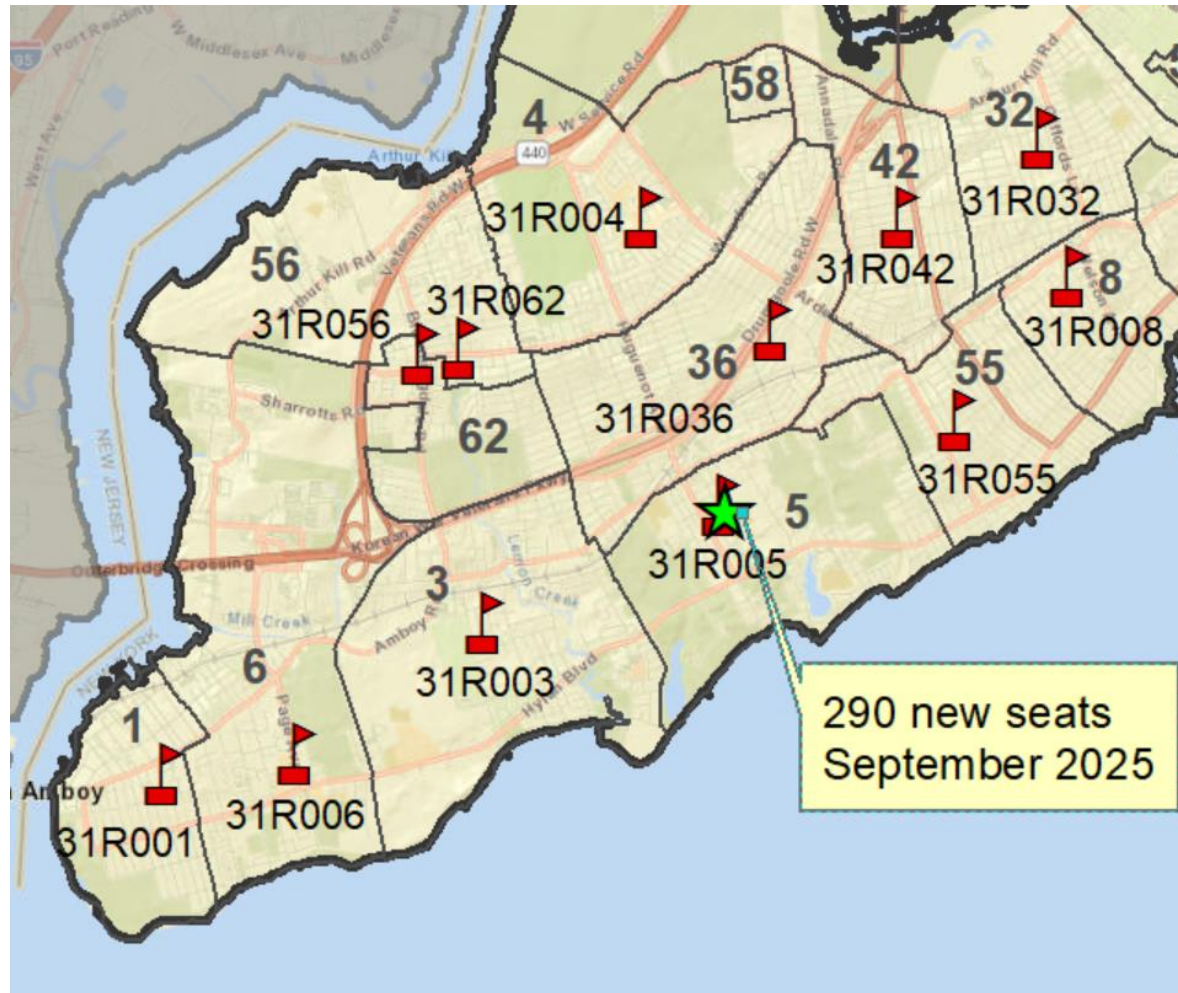
# **P.S. 5 Addition Opening in the 2025-2026 School Year**








# New Addition: R005



- There is a new addition opening for P.S. 5 in the 2025-2026 school year that will help address seat deficits for a portion of the South Shore.
- The R005 addition has a capacity of 290 seats and will include a cafeteria, library, gymnasium, and designed specialty rooms.

# R005 Addition and Neighboring Schools

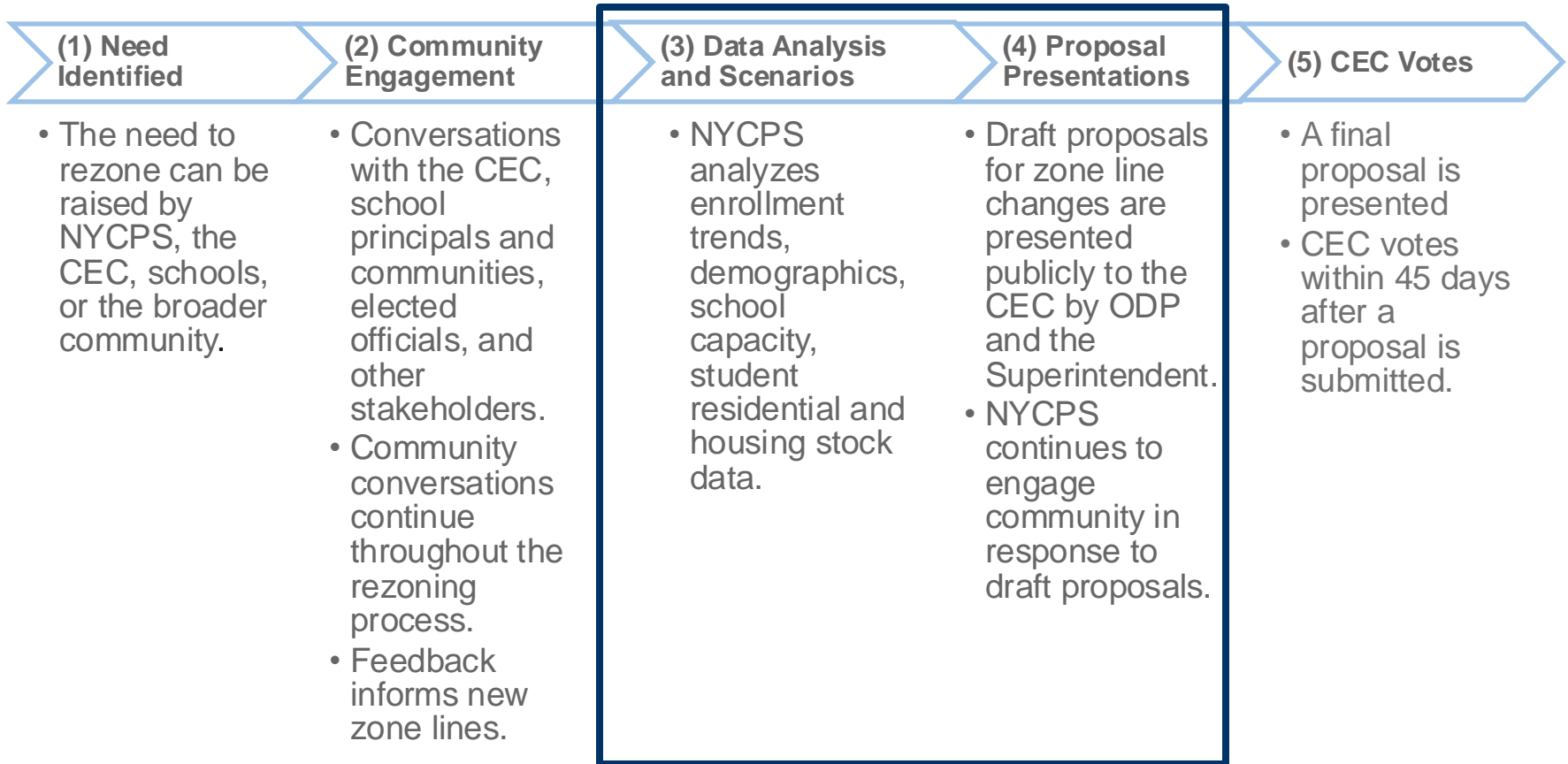


-  New Capacity 2025
-  District Elementary School
-  Charter Elementary School
-  District K-8 School
-  District K-12 School
-  Charter K-12 School
-  ES Zones Lines

290 new seats  
September 2025

# Rezoning Timeline

# Rezoning Timeline



# Areas Under Consideration for Rezoning



# District 31 Schools Near R005

- Given the forthcoming P.S. 5 addition, rezoning is a lever that could be used to help utilize the new space at P.S. 5 and relieve overutilization at nearby schools.
- The following district schools near the new R005 addition have an average utilization of 127%.

DBN	School Name	Current Enrollment <sup>1</sup>	Current Org Utilization <sup>2</sup>	Current Zone Size <sup>3</sup>
31R005	P.S. 005 Huguenot	309	172%	35
31R003	P.S. 003 The Margaret Gioiosa School	641	123%	87
31R036	P.S. 036 J. C. Drumgoole	865	135%	144
31R055	P.S. 055 Henry M. Boehm	504	106%	81

1. Current Enrollment is based on 2023-24 AR  
2. Current Org Utilization rate is based on 2022-2023 Blue Book and 2023-2024 Audited Register  
3. Current Zone Size is based on weighted average of 2021-22, 2022-23, 2023-24 data

# Potential Rezoning Areas

- Recently, we have discussed several options with SLTs and CEC 31 Rezoning Ambassadors for rezoning students from P.S. 3 and P.S. 36 to P.S. 5.
- We also considered including P.S. 55, but based on feedback to date, have decided to focus on alleviating P.S. 3 and P.S. 36.
- There are several areas from each school’s current zone that could be rezoned to P.S. 5 in order to achieve each school’s target zone size.

DBN	School Name	Projected Enrollment Range <sup>1</sup>	Projected Org Utilization <sup>2</sup>	Projected Zone Size <sup>3</sup>
31R005	P.S. 005 Huguenot	495-505	105%-107%	75-85
31R003	P.S. 003 The Margaret Gioiosa School	520-530	99%-101%	67-77
31R036	P.S. 036 J. C. Drumgoole	720-730	112%-114%	109-119

1. Target Enrollment Range is for School Year of full implementation

2. Target Org Utilization is based on projected enrollment and projected capacity at scale; PS 5 will get a 290-seat addition for the 2025-26 School Year, for a total capacity of 470

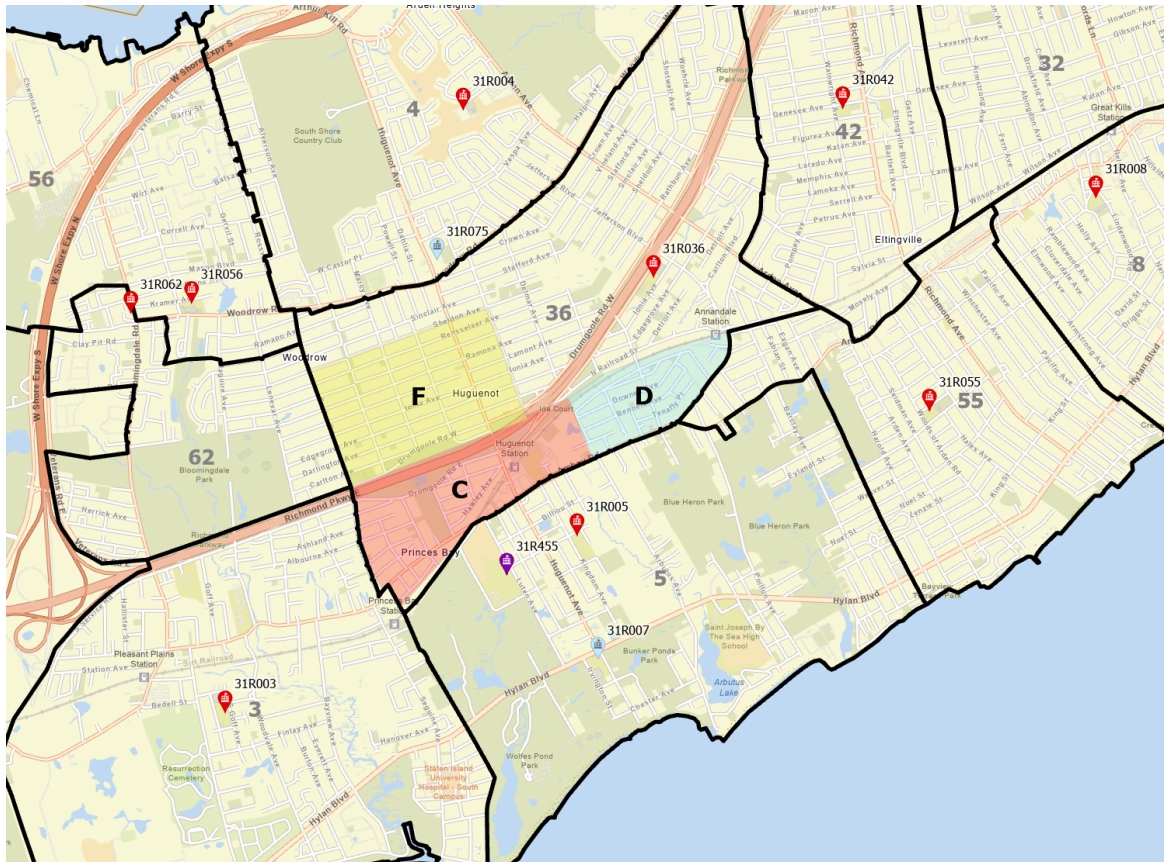
3. Target Zone Size when project is at scale

# Initial Feedback

- We have heard different perspectives for what should be most prioritized (e.g. travel distance, walking to school, traffic, and geographic barriers).
- Today, we are aiming to share the options and our perspective on some benefits and challenges and to continue to solicit community feedback.

# Potential Rezoning Areas Near R005: P.S. 36

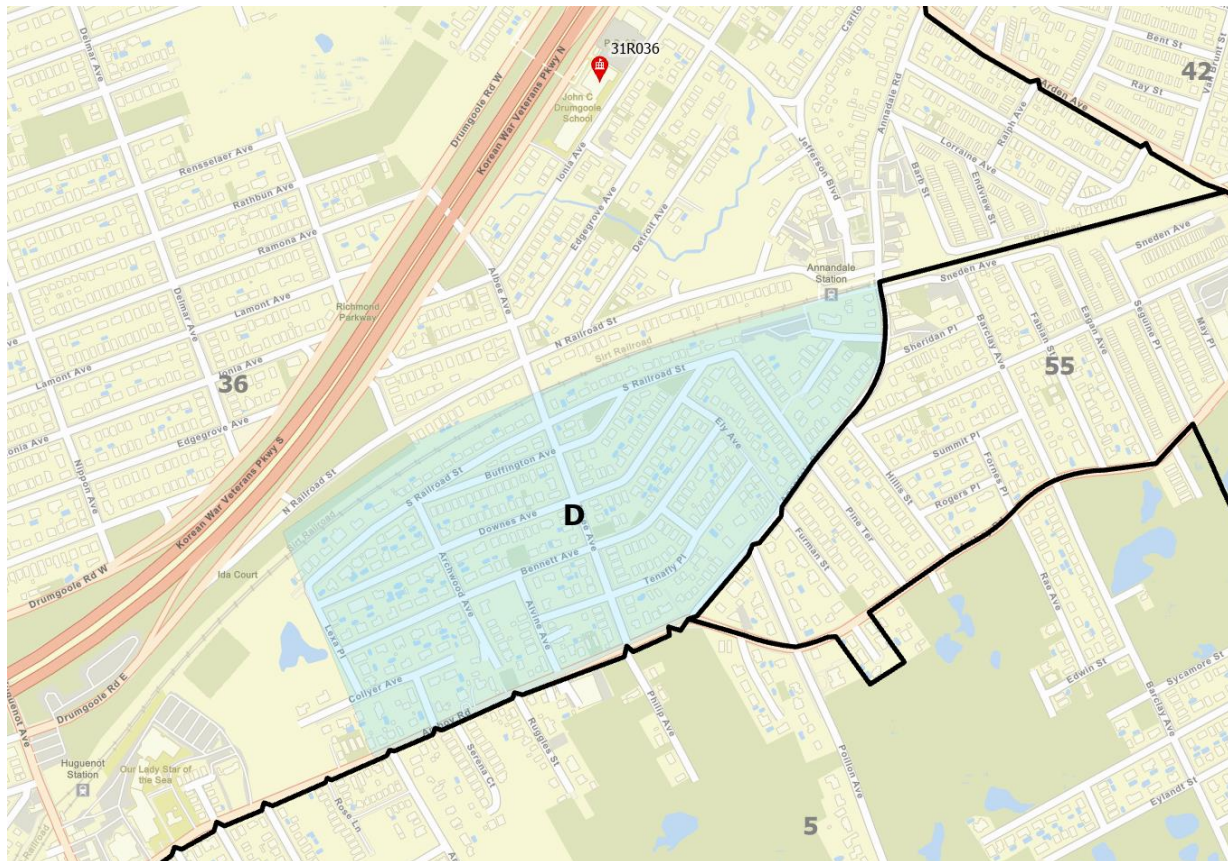
- Areas C and D or Areas C and F could be rezoned to P.S. 5 (but not all three areas).



*This map is for initial conversation and feedback purposes only. It is not a proposed rezoning map and does not include potential impacts to other schools.*

# Potential Rezoning Areas Near R005: P.S. 36 (Area D)

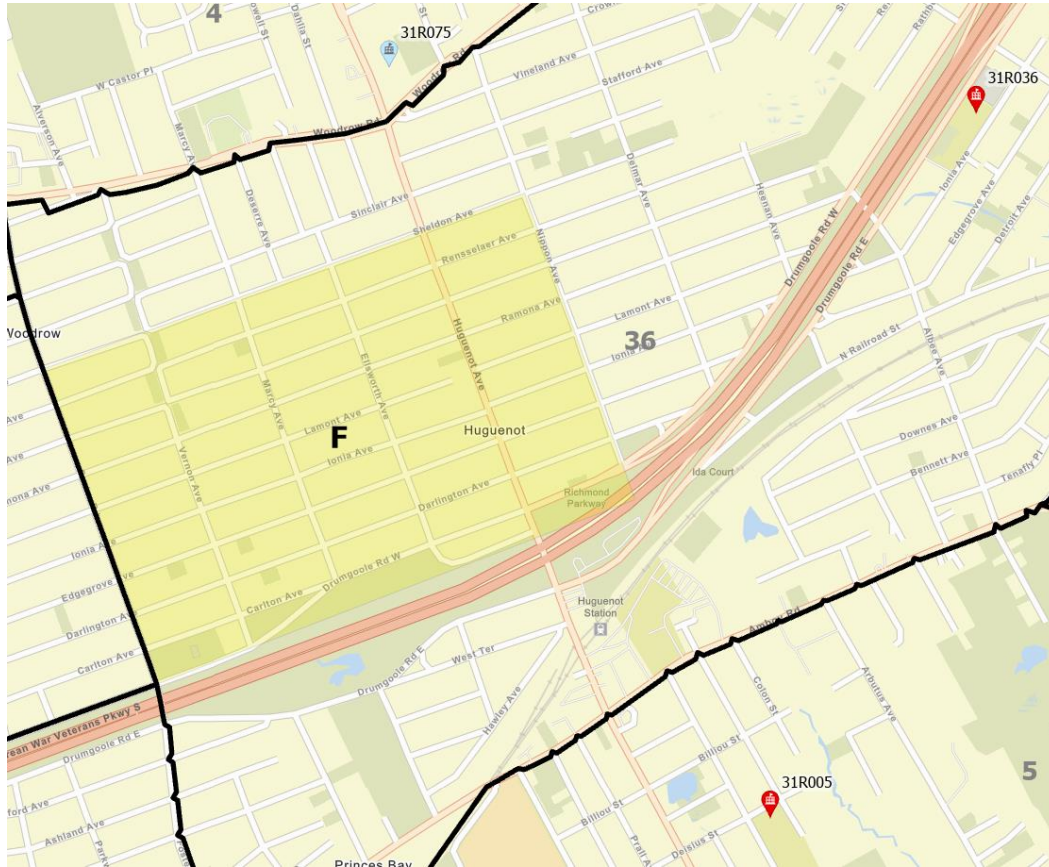
- Areas C and D or Areas C and F could be rezoned to P.S. 5 (but not all three areas).



*This map is for initial conversation and feedback purposes only. It is not a proposed rezoning map and does not include potential impacts to other schools.*

# Potential Rezoning Areas Near R005: P.S. 36 (Area F)

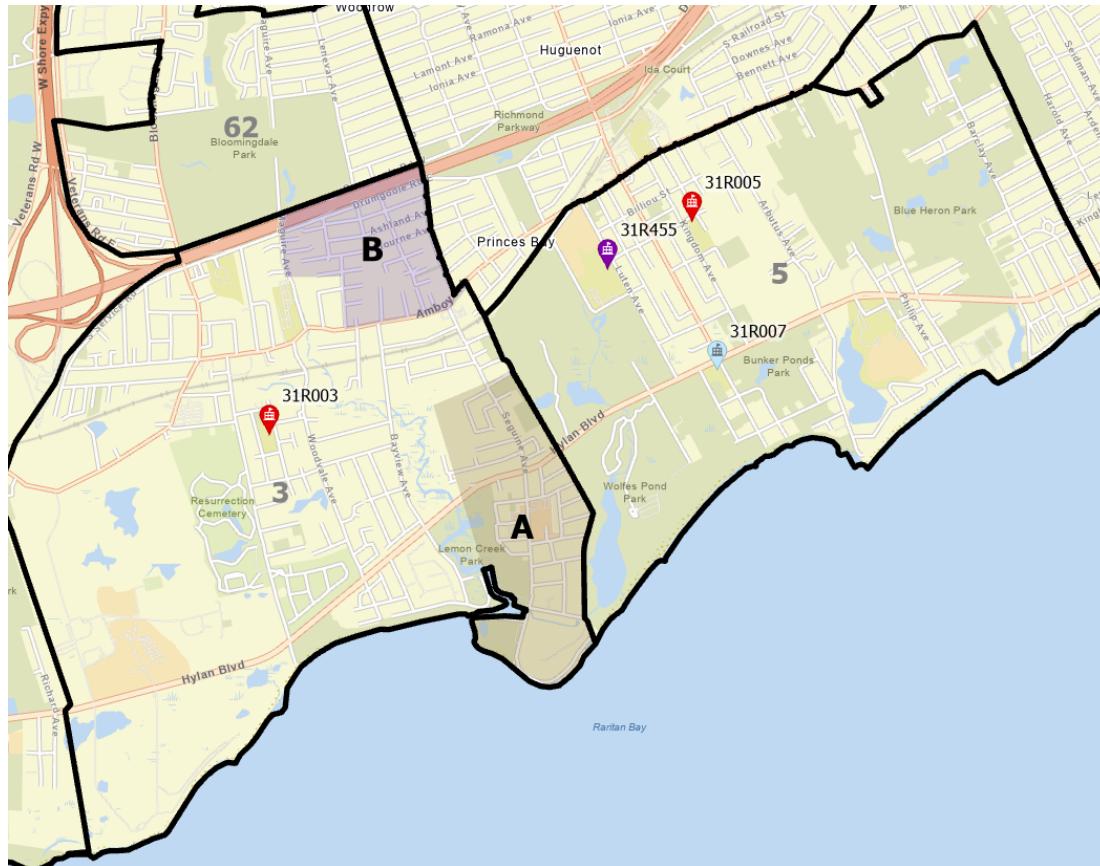
- Areas C and D or Areas C and F could be rezoned to P.S. 5 (but not all three areas).



*This map is for initial conversation and feedback purposes only. It is not a proposed rezoning map and does not include potential impacts to other schools.*

# Potential Rezoning Areas Near R005: P.S. 3

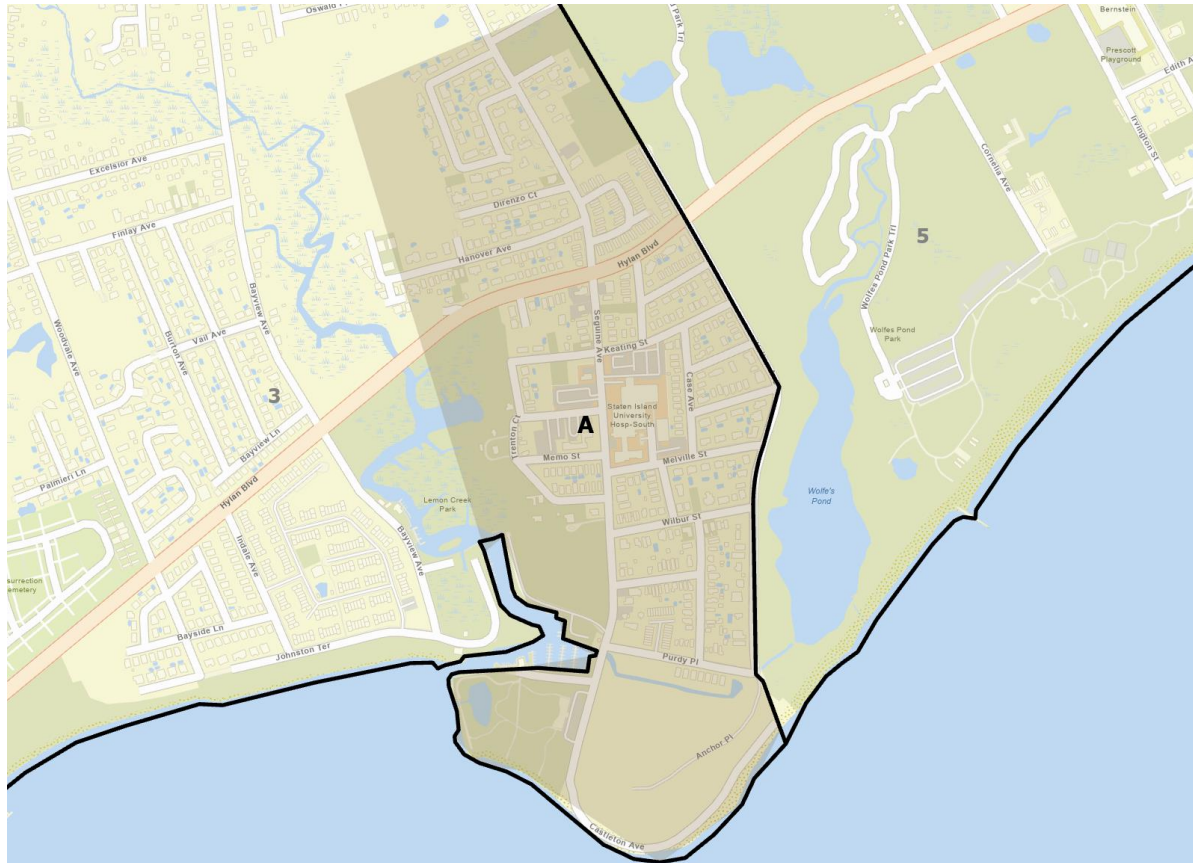
- Area **A** or **B** could be rezoned to P.S. 5 (but not both areas).



*This map is for initial conversation and feedback purposes only. It is not a proposed rezoning map and does not include potential impacts to other schools.*

# Potential Rezoning Areas Near R005: P.S. 3 (Area A)

- Area A or B could be rezoned to P.S. 5 (but not both areas).

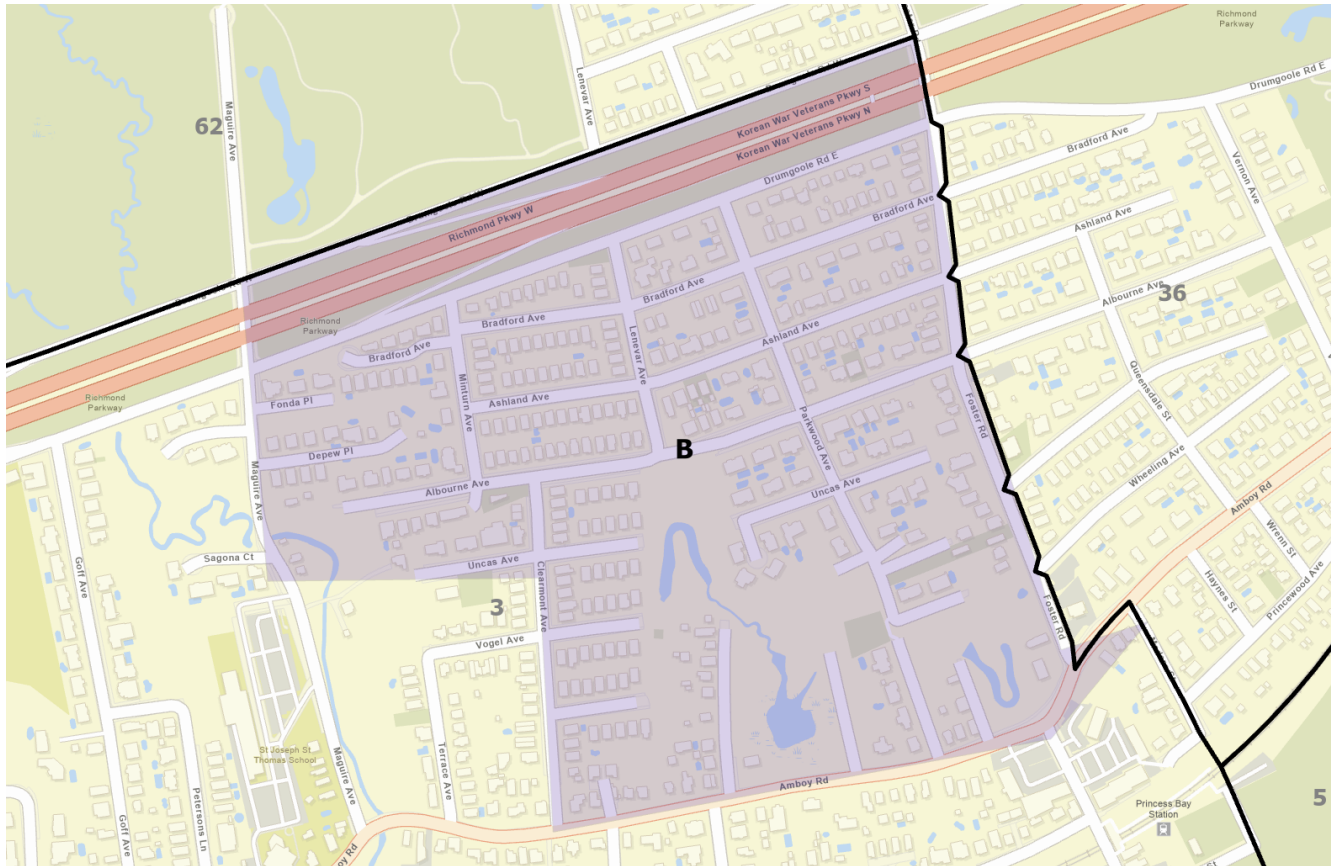


*This map is for initial conversation and feedback purposes only. It is not a proposed rezoning map and does not include potential impacts to other schools.*



# Potential Rezoning Areas Near R005: P.S. 3 (Area B)

- Area **A** or **B** could be rezoned to P.S. 5 (but not both areas).



*This map is for initial conversation and feedback purposes only. It is not a proposed rezoning map and does not include potential impacts to other schools.*

# Discussion, Questions, & Feedback

# Next Steps and Contact Information

# Next Steps

- Tonight is an opportunity to review potential rezoning areas and approaches for the rezoning, provide feedback, and ask questions.
- ODP will continue to convene additional community conversations and provide further opportunities for feedback, including but not limited to:
  - Continued discussions with CEC 31, principals, SLTs, and/or other stakeholders
  - Additional presentations from ODP at upcoming CEC meetings and/or other community forums
- We anticipate presenting a more formal rezoning proposal for CEC 31 to vote on this Fall for 2025-2026 implementation.
- **Please also feel welcome to direct any comments and questions to [Statenislandzoning@schools.nyc.gov](mailto:Statenislandzoning@schools.nyc.gov).**

# District Planning Contact Info

Adem Ali, Associate Director of Analytics

[aali25@schools.nyc.gov](mailto:aali25@schools.nyc.gov)

Max Familian, Senior Director

[Mfamilian@schools.nyc.gov](mailto:Mfamilian@schools.nyc.gov)

Tori Fenton, Director of Brooklyn North and Staten Island Planning

[tfenton@schools.nyc.gov](mailto:tfenton@schools.nyc.gov)

Chris Gurley, Associate Director of Brooklyn North and Staten Island Planning

[cgurley@schools.nyc.gov](mailto:cgurley@schools.nyc.gov)

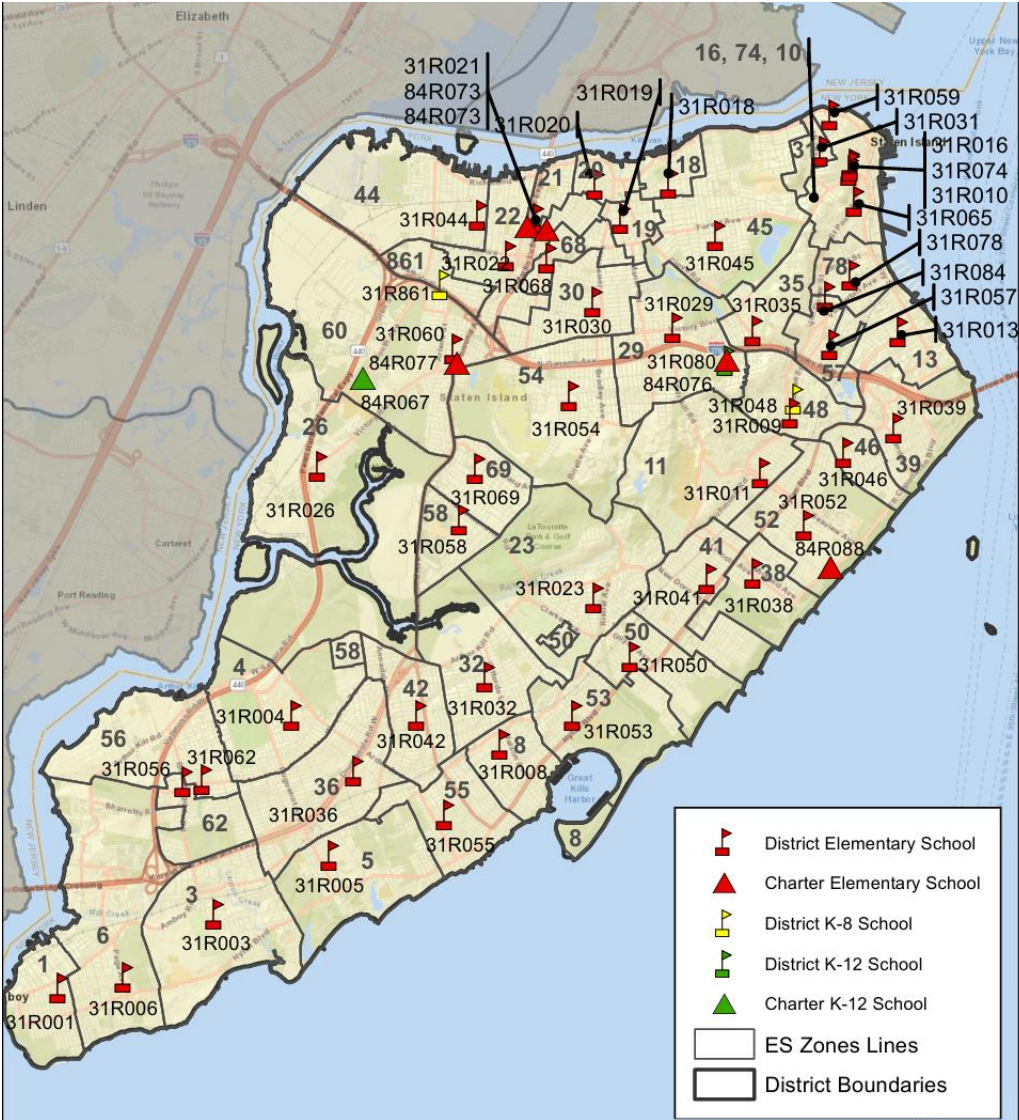
Sam Streed, Director of Analytics

[Sstreed@schools.nyc.gov](mailto:Sstreed@schools.nyc.gov)

Please also feel welcome to direct any comments and questions to [Statenislandzoning@schools.nyc.gov](mailto:Statenislandzoning@schools.nyc.gov).

# Appendix

# Current District 31 Elementary School Zones



# Frequently Asked Questions



# Which students will rezonings impact?

- For an elementary school rezoning, proposed changes would primarily impact incoming pre-kindergarten, kindergarten, or new students to the system beginning in the 2025-2026 school year. **There is no impact to students currently enrolled at a school.**
- When applying to a school impacted by an elementary school rezoning, children entering pre-kindergarten or kindergarten who live where a zone is changing **can retain their zoned sibling priority if they have a sibling attending that school.**

# How will rezonings impact enrollment at nearby schools?

- NYCPS continues to engage principals of schools near the new buildings opening, CEC members, and community members in the rezoning planning process. Feedback collected from stakeholders informed draft zone lines.
- The rezoning scenarios we will discuss aim to support schools that have historically experienced overcrowding by decreasing the sizes of these schools' zones.

# How are new zone lines developed?

- In order to draw new zone lines, NYCPS:
  - Determines the appropriate number of students that should live in each zone (“target zone size”) based on space and historic demand and trends
  - Projects future students residing in both existing housing and upcoming residential construction
- NYCPS draws new zones that:
  - Are projected to contain the target zone size for each school
  - Promote diversity and integration across schools
  - Consider geographic barriers and travel distance